



32 High Meadows, Exeter

Guide Price £290,000



32 High Meadows

Exeter, Exeter

Charming 2-bed semi-detached bungalow in desirable area. Potential investment opportunity with room for personal touch. Bright living area, dream kitchen, 2 peaceful bedrooms. Garage for storage. Requires updates but offers great potential. Convenient location. Ideal for investors or homeowners seeking a stylish retreat.

Council Tax band: TBD

Tenure: Freehold

EPC Energy Efficiency Rating: D

EPC Environmental Impact Rating: D



Kitchen

This newly decorated kitchen is bright and modern, featuring a large window by the sink that fills the room with natural light. It offers wooden laminate flooring, crisp white worktops, spotlight lighting, and a stainless steel sink. Practical touches include an overhead extractor fan and a seamlessly integrated fridge freezer, giving the space a clean and contemporary finish.

Bathroom

A stylish new bathroom featuring a large horizontal frosted window for natural light and privacy. It includes a walk-in double shower, white toilet, and sink with a storage cupboard beneath. Finished with grey laminate flooring and creamy-grey tiled walls, the space feels modern and fresh.

Bedroom 1

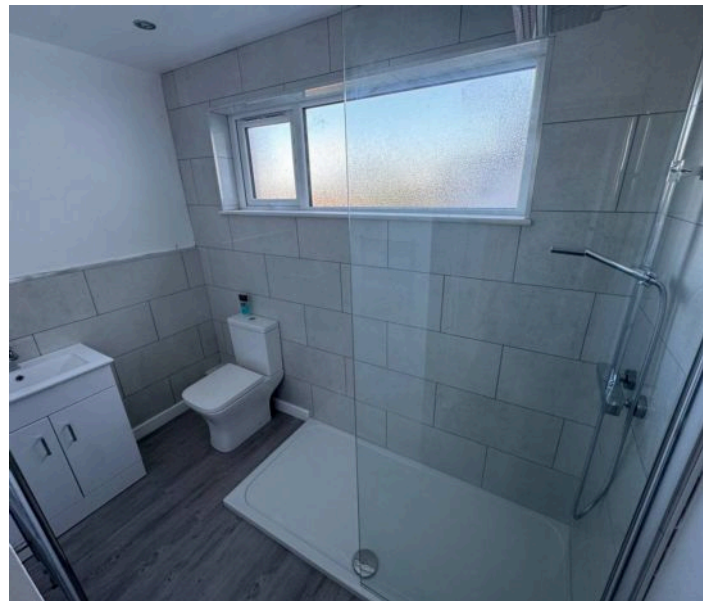
A generously sized bedroom with a large rear-facing window, allowing plenty of natural light. The room comfortably accommodates a double bed and features a radiator beneath the window, creating a bright and cosy space.

Bedroom 2

This double bedroom offers a small built-in wardrobe and neutral white walls, providing a versatile space ready to suit a variety of styles. While the room currently has wallpaper, it would benefit from new flooring and minor decorative updates, allowing the new occupant to personalise it to their taste.

Living/Dining Room

A spacious living and dining area featuring a large window that fills the room with natural light. The space includes a radiator and neutral white walls, offering a blank canvas ready for new flooring and personal touches.





GARAGE

Single Garage

OFF STREET

2 Parking Spaces







Winfields Signature

Winfields, Higher Huxham, Belmont Road, Exeter - EX1 2HF

01392984126 • sales@winfieldsgroup.co.uk • winfieldsgroup.co.uk/